

## OBJECT WOMEN

### A history of women in photography by **Alix Beeston**

[www.instagram.com/objectwomen](http://www.instagram.com/objectwomen)

All photographs are used by permission of the artists and their estates; the majority of the images have been provided by the George Eastman Museum. The author would like to thank Lauren Lean and Dave Beeston for their assistance in securing the permissions for this project, and the School of English, Communication and Philosophy at Cardiff University for the provision of funds for image costs. Every effort has been made to ensure the complete and accurate credit and use of all images. Please email [beestona@cardiff.ac.uk](mailto:beestona@cardiff.ac.uk) if there are any issues and they will be rectified immediately.

**Unidentified maker.** Old woman holding post-mortem daguerreotype, ca. 1845. Daguerreotype. George Eastman Museum, purchase with funds from the Horace W. Goldsmith Foundation, ex-collection Walter A. Johnson. Courtesy of the George Eastman Museum



**Auguste Vacquerie** (French, active ca. 1850). *The hand of Madame Hugo*, ca. 1853. Salted paper print. George Eastman Museum, gift of Eastman Kodak Company, ex-collection Gabriel Cromer. Courtesy of the George Eastman Museum



**Unidentified maker.** Portrait of two unidentified women, twins, ca. 1855. Daguerreotype. George Eastman Museum, gift of Donald K. Weber. Courtesy of the George Eastman Museum



**Unidentified maker.** [African American woman wearing white gloves], ca. 1855. Daguerreotype with applied color. George Eastman Museum, gift of Eaton Lothrop. Courtesy of the George Eastman Museum



**Henry Peach Robinson** (British, 1830–1901). *She Never Told Her Love*, ca. 1858. Albumen silver print. George Eastman Museum, purchase. Courtesy of the George Eastman Museum



**Mathew B. Brady** (American, ca. 1823–1896). Couple, ca. 1860. Ambrotype. George Eastman Museum, gift of Florence Mahon. Courtesy of the George Eastman Museum



**André-Adolphe-Eugène Disdéri** (French, 1819–1889). *Les jambes de l'opera* [*The Legs of the Opera*]. Ambrotype., ca. 1862. Albumen silver print. Courtesy of the J. Paul Getty Museum, Los Angeles



**Julia Margaret Cameron** (British, b. India, 1815–1879). *Madonna and Two Children*, 1864. Albumen silver print. George Eastman Museum, purchase with funds from an anonymous donor, ex-collection George Frederic Watts. Courtesy of the George Eastman Museum



**Unidentified maker.** [Woman with two spirit images], ca. 1865. Tintype with applied color. George Eastman Museum, gift of Donald K. Weber. Courtesy of the George Eastman Museum



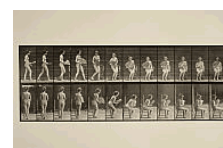
**Lewis Carroll** (English, 1832–1898). *Xie Kitchin with Umbrella*, ca. 1875. Albumen silver print. George Eastman Museum, purchase. Courtesy of the George Eastman Museum



**Napoleon Sarony** (American, b. Canada, 1821–1896). *Ella Wesner*, ca. 1880. Albumen silver print. George Eastman Museum, museum accession. Courtesy of the George Eastman Museum



**Eadweard J. Muybridge** (English, 1830–1904). *Sitting down on chair and opening fan*, ca. 1884–1887. From the series *Animal Locomotion*. Collotype. George Eastman Museum, gift of Ansco. Courtesy of the George Eastman Museum



**Unidentified maker.** Four women posed humorously in studio, ca. 1890. Tintype. George Eastman Museum, museum accession. Courtesy of the George Eastman Museum



**Edward S. Curtis** (American, 1868–1952). *A Pomo Girl*, 1896-1924. Photogravure, printed 1924 by Suffolk Engraving Co. George Eastman Museum, purchase. Courtesy of the George Eastman Museum



**Anne W. Brigman** (American, 1869–1950). *The Heart of the Storm*, 1906. Gelatin silver print, printed 1912. George Eastman Museum, gift of Willard M. Nott. Courtesy of the George Eastman Museum



**George H. Seeley** (1880–1955). *The Firefly*, ca. 1907. Photogravure. George Eastman Museum, museum accession. Courtesy of the George Eastman Museum



**Gertrude Käsebier** (American, 1852–1934). *Lollipops*, ca. 1910. Digital positive from the original gelatin silver negative. George Eastman Museum, gift of Mina Turner. Courtesy of the George Eastman Museum



**Paul Strand** (American, 1890–1976). *Photograph, New York*, 1915. Photogravure. George Eastman Museum, purchase with funds from Eastman Kodak Company. Courtesy of the George Eastman Museum



**Alfred Stieglitz** (American, 1864–1946). *Ellen Koeniger, Lake George*, 1916. Gelatin silver print, printed later. George Eastman Museum, purchase and gift of Georgia O'Keeffe. Courtesy of the George Eastman Museum



**Eugène Atget** (French, 1857–1927). *Avenue de l'Observatoire*, 1926. Gelatin silver print. George Eastman Museum, purchase. Courtesy of the George Eastman Museum



**Man Ray** (American, 1890–1976). *Solarization*, 1931. Gelatin silver print. George Eastman Museum, purchase. Courtesy of the George Eastman Museum. © Man Ray Trust/ADAGP, Paris and DACS, London 2017



**František Drtikol** (Czechoslovakian, 1883–1961). *Composition*, 1929. Pigment print. George Eastman Museum, gift of Dr. E.P. Wightman. Courtesy of the George Eastman Museum © The Estate of František Drtikol



**Tina Modotti** (Italian, 1896–1942). *Woman of Tehuantepec*, ca. 1929. Gelatin silver print. George Eastman Museum, museum accession. Courtesy of the George Eastman Museum



**Doris Ulmann** (American, 1882–1934). *Old woman sitting in front of a stone wall*, ca. 1930. Gelatin silver print. Courtesy of the Special Collections and University Archives, University of Oregon Libraries, Eugene, Oregon



**Edward Steichen** (American, b. Luxembourg, 1879–1973). *Anna May Wong*, 1930. Gelatin silver print. George Eastman Museum, bequest of Edward Steichen under the direction of Joanna T. Steichen. Courtesy of the George Eastman Museum



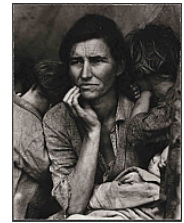
**Ilse Bing** (American, b. Germany, 1899–1998). *Self-Portrait with Leica*, 1931. Gelatin silver print, printed 1985. George Eastman Museum, purchase with funds from the Charina Foundation. Courtesy of the George Eastman Museum. © Estate of Ilse Bing



**Hans Bellmer** (German, 1902–1975). *The Doll*, ca. 1934. Gelatin silver print with applied color, printed ca. 1949. George Eastman Museum, purchase with funds from Alvin Langdon Coburn Fund. Courtesy of the George Eastman Museum. © ADAGP, Paris and DACS, London 2017



**Dorothea Lange** (American, 1895–1965). *Migrant Mother, Nipomo, California*, 1936. Gelatin silver print, printed later. George Eastman Museum, museum accession. Courtesy of the George Eastman Museum



**Walker Evans** (American, 1903–1975). *Woman and child on subway*, 1938–1941. From the series “*Subway Series*,” 1941. Gelatin silver print. George Eastman Museum, gift of Arnold Crane. Courtesy of the George Eastman Museum. © Walker Evans Archive, The Metropolitan Museum of Art



**Lisette Model** (American, b. Austria, 1901–1983). *Coney Island*, 1941. Gelatin silver print. George Eastman Museum, purchase. Courtesy of the George Eastman Museum. © Lisette Model Foundation



**Victor Keppler** (American, 1904–1987). *Nescafé, Martha Scott drinking coffee*, 1946. Gelatin silver print. George Eastman Museum, gift of Victor Keppler. Courtesy of the George Eastman Museum. © Victor Keppler Estate



**Manuel Álvarez Bravo** (Mexican, 1902–2002). *Umbral*, 1947. Gelatin silver print, printed 1977. George Eastman Museum, gift of Frederick Myers. Courtesy of the George Eastman Museum. © Archivo Manuel Álvarez Bravo, S.C./ Asociación Manuel Álvarez Bravo, A.C



**Margaret Bourke-White** (American, 1904–1971). *Khadeeja Feroze Ud-din, a deputy directress of Education, veils face and hands in the presence of men*. ca. 1947. Gelatin silver print. George Eastman Museum, museum accession. Courtesy of the George Eastman Museum. © *Time/LIFE*



**Berenice Abbott** (American, 1898–1991). *Portrait of the Artist as a Young Woman*, negative ca. 1930, distortion ca. 1950. Gelatin silver print. Courtesy of Getty Images. © Berenice Abbott/Commerce Graphics



**Nickolas Muray** (American, b. Hungary, 1892–1965). *Woman in cell, playing solitaire*, ca. 1950. Chromogenic development transparency. George Eastman Museum, gift of Michael Brooke Muray, Nickolas Christopher Muray, and Gustav Schwab. Courtesy of the George Eastman Museum. © Nickolas Muray Photo Archives



**Imogen Cunningham** (American, 1883–1976). *Self-portrait on Geary Street, 1958*. Gelatin silver print. George Eastman Museum, purchase. Courtesy of the George Eastman Museum. © 1958, 2018 Imogen Cunningham Trust



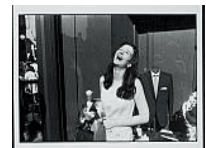
**Lee Friedlander** (American, b. 1934). *New York City, 1966*. Gelatin silver print. George Eastman Museum, purchased with funds from Lila Acheson Wallace. Courtesy of the George Eastman Museum. © Lee Friedlander Estate



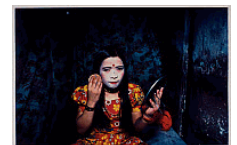
**Robert Heinecken** (American, 1931–2006). *Mansmag, October 1969*. Offset photolithograph. George Eastman Museum, gift of the photographer. Courtesy of the George Eastman Museum. © Robert Heinecken Estate



**Garry Winogrand** (American, 1928–1984). *Woman with ice cream cone laughing, ca. 1975*. Gelatin silver print. George Eastman Museum, gift of Arthur Goldberg. Courtesy of the George Eastman Museum. © Garry Winogrand Estate



**Mary Ellen Mark** (American, 1940–2015). *Nepalese Girl Powdering Her Skin, 1978*. From the series *Falkland Road*. Dye imbibition print. George Eastman Museum, gift of Marianne Boesky Gallery. Courtesy of the George Eastman Museum. © Mary Ellen Mark Foundation



**Victor Schrager** (American, b. 1950). Courtesy of the George Eastman Museum. © Victor Schrager



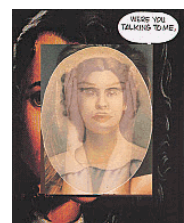
**Joan Lyons** (American, b. 1937). *Presences, 1980*. Offset photolithograph. George Eastman Museum, purchase with funds from the National Endowment for the Arts, and the Intrepid Fund. Courtesy of the George Eastman Museum. © Joan Lyons



**Carrie Mae Weems** (American, b. 1953). *Magenta Colored Girl, 1987*. Gelatin silver prints with vinyl lettering on acrylic. George Eastman Museum, purchase with funds from the Charina Foundation. Courtesy of the George Eastman Museum. © Carrie Mae Weems



**Joyce Neimanas** (American, b. 1944). *Face Lift, 1993*. From the series *“Legends of the Powerless,”* 1993. Inkjet print. George Eastman Museum, purchase: Warren and Margot Coville Fund. Courtesy of the George Eastman Museum. © Joyce Neimanas



**Lalla Essaydi** (Moroccan, b. 1956). *Les Femmes du Maroc #45, 2006*. Chromogenic development print, printed 2008. George Eastman Museum, purchase with funds from the Horace W. Goldsmith Foundation. Courtesy of the George Eastman Museum. © Lalla Essaydi



**Lilly Lulay** (German, b. 1985). *f1vbg23ock.jpg*, 2012. From the series *Zeitreise*. Photocollage (gelatin silver print and inkjet print). George Eastman Museum, gift of Joseph Cunningham in honor of Lisa Hostetler. Courtesy of the George Eastman Museum. © Lilly Lulay



**Gillian Wearing** (British, b. 1963). *Me as Talbot*, 2013. Gelatin silver print. George Eastman Museum, purchase with funds from the Photography Collection Committee, the Charina Foundation, Kate and Steve Foley, and the Rochester Collectors Circle. Courtesy of the George Eastman Museum. © Gillian Wearing

